



رؤية  
VISION  
2030  
المملكة العربية السعودية  
KINGDOM OF SAUDI ARABIA

College of Languages and Translation

1445H/ 2023

# PHD Program in Applied Linguistics Handbook

**1st edition**

PHD in Applied Linguistics  
COLLEGE OF LANGUAGES AND TRANSLATION (CLT)



## Table of contents

1. Welcome Message from the Dean -----	2
2. Introduction -----	3
3. Program Identification and General Information -----	4
4. Mission, Goals, and goals -----	4-5
5. Aligning The program Mission and goals with That of The College, and University -----	6
6. Program Learning Outcomes -----	7-8
7. Program Management and Regulations -----	8-9
8. Curriculum -----	10-15
9. Thesis and its Requirements -----	15-17
10. Student Admission and Support -----	18-22
11. Student Rights and Duties -----	23-25
12. Program Quality Assurance -----	25-26
13. Guide Approval Authority -----	27
14. Useful links -----	28
15. Contact Us -----	29



## Welcome Message from the Dean



Language is not merely a tool for communication; it is a profound reflection of human culture, history, and identity. Throughout the ages, languages have developed and evolved, carrying within them the nuances of diverse societies, and offering us glimpses into the tapestry of human experience.

With strong support from our government and the endorsement of our university leaders, the College of Languages and Translation remains committed to achieving our goals of facilitating global communication and community service. We offer an integrated doctoral program in Translation, Linguistics, and English Literature.

The PhD Program in Applied Linguistics stands as a testament to our commitment to advancing the frontiers of knowledge in this vital field. This handbook serves as a comprehensive guide to equip you with the necessary information and resources to embark upon a transformative academic journey.

Within these pages, you will find a wealth of knowledge, research methodologies, and theoretical frameworks that will empower you to explore the multifaceted dimensions of language and its practical applications. Our distinguished faculty, renowned experts in various subfields of applied linguistics, have contributed their expertise to shape this handbook into a valuable resource for aspiring scholars like yourself.

Our dedicated administrative staff is committed to providing you with the necessary guidance and administrative support, ensuring a seamless and enriching experience.

Once again, I welcome you to the PhD Program in Applied Linguistics Handbook. May your journey be intellectually stimulating, personally rewarding, and transformative.

Sincerely,

**Dean, College of Languages and Translation**



## 1. Introduction

Welcome to the Handbook of the Doctor of Philosophy (PhD) Program in Applied Linguistics at the College of Languages and Translation, Imam Mohammed Ibn Saud Islamic University. Our program offers a comprehensive and rigorous academic journey that encompasses teaching, learning, scientific research, and community service.

The primary objective of the program is to develop expertise in applied linguistics, enabling individuals to make significant contributions to the advancement of knowledge in this field. This handbook serves as a valuable resource for all stakeholders involved in the program, including faculty, staff, and those currently enrolled in the Doctoral Program.

Within this handbook, you will find an overview of the program's policies and requirements. It provides a consistent understanding of the expectations and guidelines that accompany the academic journey. By familiarizing yourself with this information, you will be better equipped to navigate the program successfully. Our dedicated faculty and staff members are here to support and guide individuals on their path to success. Should there be any questions or a need for additional information, please do not hesitate to reach out to them. Their expertise and assistance are instrumental in facilitating progress and ensuring a fulfilling educational experience.



## 1. Program Identification and General Information



**Mode of Study:** On Campus

University Campus: Imam Mohammad Ibn Saud Islamic University – College of Languages and Translation –Buildings No. **308 & 326**



**Study system:** Coursework & Thesis

## 2. Program Vision, Mission, and Goals



A pioneering and sustainable PhD program in Linguistics that fosters academic excellence, cutting edge research, robust job prospects, interlingual and intercultural communication and civic engagement.



Prepare qualified applied linguists well versed in applied aspects of language studies, research, and technology by providing excellent education and producing cutting-edge research that ensure perfect participation in academics, rigorous research, and quality linguistic community services.



### **Program Goals:**

1. Graduate highly-educated individuals with solid basis and in-depth knowledge of various applied linguistics linguistic fields.
2. Equip students with the knowledge and skills needed to undertake doctoral research in applied linguistics as well as skills relevant to a range of careers in applied linguistics.
3. Create a robust research environment in applied linguistics that is conducive to applying and publishing pioneering international research.
4. Provide students with broad-based training in modern technologies and techniques for linguistic data elicitation and analysis.
5. Prepare applied linguistics specialists who are able to convert their knowledge into useful and meaningful reality applicable to various practical fields and community services.



### 3. Aligning Program Mission and Goals with that of the Department, College, and University

College	Department	Program	Date	
College of Languages and Translation	English Language and its Literature	Doctor of Philosophy in Applied Linguistics	18/09/1444	
Mission				
Program	Department	College	University	Alignment
Prepare qualified applied linguists well versed in applied aspects of language studies, research, and technology by providing excellent education and producing cutting-edge research that ensure perfect participation in academics, rigorous research and quality linguistic community services	The mission of the English department is to prepare students for careers in language studies, literature, and translation through a rigorous curriculum, critical thinking, research, and community engagement.	Providing outstanding educational programs for students of high quality that equip them with the necessary cognitive and research skills in the fields of language studies, literature, linguistics, and translation, supported by Islamic values to assist them in developing the community in academic, research, and professional fields.	Offering high-quality academic programs and conducting high-impact research through a stimulating environment, well governed administrative systems, advanced technology, sustainable resources, and effective partnerships to achieve competitive outputs that would meet the needs of the labour market and contribute in building knowledge economy and serving the local and global community.	The mission of the Program, Department, College, and University are aligned in their commitment to producing highly skilled professionals in the field of language studies, literature, and translation through a rigorous curriculum, critical thinking, research, and community engagement. All levels share the goal of preparing graduates who are well-versed in theoretical and applied aspects of language studies, teaching, and research, with the ability to participate in international research and linguistic community services. The Department and College's focus on Islamic values and community development complement the University's mission to contribute to the knowledge economy and serve the local and global community through high-quality academic programs and impactful research.



## 4. Program Learning Outcomes

**\*\*** Program Learning Outcomes refer to the specific knowledge, skills, and values that students are expected to acquire and demonstrate upon completion of a program of study. They articulate the core competencies and achievements that students should attain, reflecting the overall goals and educational objectives of the program.



### Knowledge and Understanding

1. Discuss clear scientific details in main topics in applied linguistics including psycholinguistics, sociolinguistics, discourse analysis, language acquisition, language teaching and evaluation.
2. Describe elaborately the role of technology in linguistic studies and research.
3. List and explain several theoretical tools and various forms of research methods and statistics necessary to read, reflect, criticize, and conduct research in applied linguistics.



### Skills

1. Examine thoroughly the relationship between the study of language and other fields such as sociology, psychology, language teaching and learning.
2. Use current technological tools to study language/ language applications.
3. Evaluate and test the applicability of different language acquisition theories/ approaches in the field of language teaching methodology, curricula, and language assessment.





4. Practice designing and executing research projects, including collecting and analysing data, and drawing conclusions based on findings.

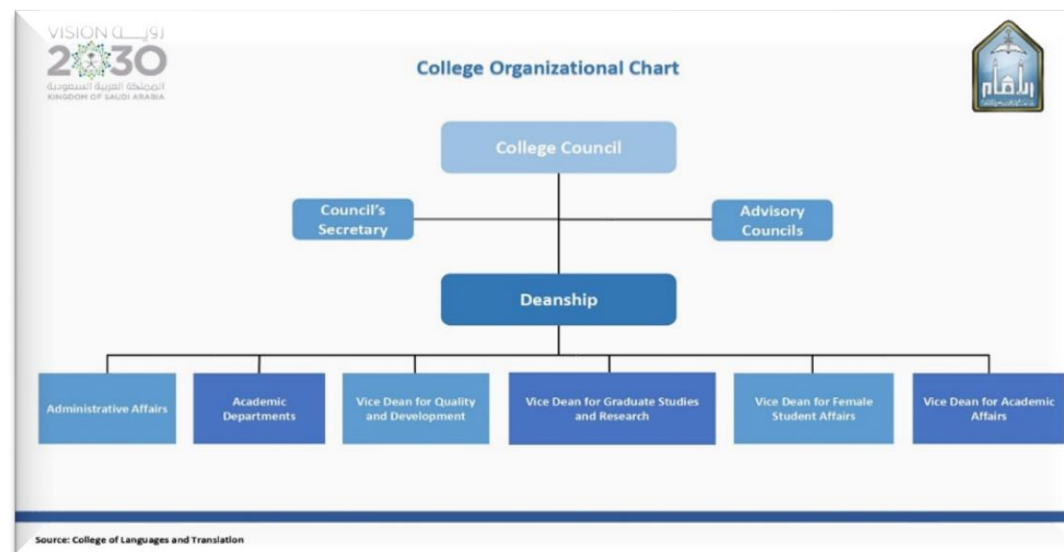


### Values

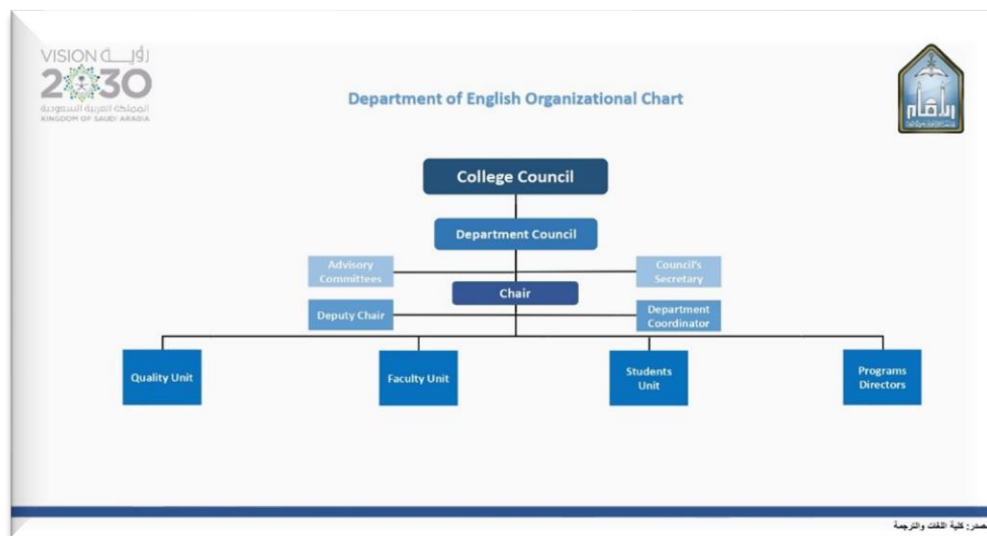
1. Conduct research in accord with the ethical standards and best practices of the discipline.
2. Work flexibly, collaboratively, critically, and creatively in teams to exchange theoretical knowledge, research proficiencies, and professional skills.
3. Show individual responsibility autonomous creativity, intellectual independence and proactive decision-making in complex academic and professional situations
4. Demonstrate autonomous creativity, intellectual independence and proactive decision-making in complex academic and professional situations.

## 5. Program Management and Regulations

The administrative flowchart of the college reflects its focus on efficiency, accessibility, and performance. The college has a number of vice-deanships (students' affairs, quality, higher studies) to ensure the smooth functioning of the program. In addition, there are a number of units and committees specially formed to take care of horizontal coordination between boards, units, and committees. The Unit of Research Development is directly related to the area of postgraduate studies where research is a pivotal concept.



In addition to the general organizational chart of the college, there is another specific organigram for higher studies (see flowchart below). It vertically links the MA and PhD coordinators to a chain of horizontal administrative units catering for the needs of the postgraduate program, including archiving, research activities, program design and revision, and students' affairs. This research-oriented departmentalization of the program administration is meant to ensure its smooth and efficient running.



## 6. Curriculum

### 6.1 Study Plan Structure



#### Applied Linguistics

Program Structure		No. of Courses	Credit Hours	Percentage
Course	Required	12	48	73%
	Elective	-	-	-
Thesis		1	18	27%
Total		13	66	100%



## 6.2 Program Courses

Level	Course Code	Course Title	Pre-Requisite Courses	Credit Hours
Level 1	LNG 7101	Research Methods in Linguistics	--	4
	LNG 7150	Corpus Linguistics	--	4
Level 2	LNG 7163	Sociolinguistics	LNG 7101 LNG 7150	4
	LNG 7175	Discourse analysis	LNG 7101 LNG 7150	4
Level 3	LNG 7162	Language Acquisition and Bilingualism	LNG 7163 LNG 7175	4
	LNG 7165	Psycholinguistics	LNG 7163 LNG 7175	4
Level 4	LNG 7262	Language Acquisition & Learning	LNG 7162 LNG 7165	4
	LNG 7266	Approaches & Methods in Language Teaching	LNG 7162	4



Level	Course Code	Course Title	Pre-Requisite Courses	Credit Hours
			LNG 7165	
Level - 5	LNG 7269	Language Testing and Evaluation	LNG 7262 LNG 7266	4
	LNG 7270	Advanced Topics in Applied Linguistics	LNG 7262 LNG 7266	4
Level - 6	LNG 7268	Technology Applications in Applied Linguistics	LNG 7270 LNG 7269	4
	LNG 7267	Language Program Design & Evaluation	LNG 7270 LNG 7269	4
Level - 7	LNG 7301	Comprehensive Exams	LNG 7268 LNG 7267	0
Level - 8	LNG 7399	Dissertation	LNG 7301	18

**\*\*** For detailed information on course descriptions, including objectives, learning outcomes, content, and assessment methods, please visit the program's page on the college's website. Registered students can access the page through the provided link.

<https://units.imamu.edu.sa/colleges/LanguageAndTranslation/phd/Pages/appliedLing.aspx>






### 6.3 Program Teaching and Learning Strategies



The program employs engaging and thought-provoking teaching and learning strategies designed to foster interactive and immersive learning experiences. These strategies serve as essential tools to help us achieve our Program Learning Outcomes (PLOs). Some of the key strategies we utilize include:

	<p><b>Teaching for Understanding</b> - The instructors in this strategy are mainly concerned with highlighting inconsistencies in learners' conceptions of some applied linguistic topics and their consequences and reflections in real life situations. It is more related to the program learning outcomes falling in the area of the knowledge domain.</p>
	<p><b>Knowing What and Knowing How</b> - "Knowing how" introduces the students to innovative strategies and alternates between them to learn specific theories of Theoretical &amp; Applied Linguistics. "Knowing what" is a strategy initiated by the program instructors to help their students decide on what topics are given priorities to learn in their Ph.D. program. This strategy is more related to the program learning outcomes falling in the area of skills.</p>
	<p><b>Lecturing</b> - program professors use this method to inspire their students by linking their learning insights and research interests to the excitement of research and scholarship to implementing the program learning outcomes.</p>



	<p><b>E- learning and online teaching strategies</b> - These strategies encompass the use of online learning management system (<b>Blackboard</b>), multimedia resources, discussion forums, virtual classrooms, and collaborative tools to engage students in remote learning environments. The aim is to ensure effective knowledge dissemination, active learner participation, and meaningful interaction among students and instructors in the online educational setting.</p>
	<p><b>Problem-Inquiry- Based Learning Strategy</b> - this strategy involves an active and student-centred approach to learning, where students are presented with real-world problems or challenging questions as the starting point for their inquiry. This strategy encourages students to explore, analyse, and critically evaluate information, fostering their problem-solving skills and promoting deep understanding of the subject matter.</p>
	<p><b>Project based learning strategy</b> _ in which students collaborate together or work individually on specific linguistic projects/ research topics to reach the required project outcomes.</p>

## 6.4 Student Assessment Methods



Assessing the program learning outcomes (PLOs) depend on diverse evaluation methods as specified in the course specifications for the course learning outcomes (CLOs) of each course. The choice of strategy depends on the content of a course and how it best measures each domain of learning. These methods include the following:



- ✓ Formative diagnostic assessment (i.e. progress achievement testing)
- ✓ Formal summative assessment (i.e. final achievement in-class testing)
- ✓ Graded home assignments
- ✓ Seminar discussions or presentations
- ✓ Self-editing tasks (e.g. in workshops, collaborations, using proof-reading skills...etc.)
- ✓ Student presentations (e.g.PPT)
- ✓ Portfolios (training, personal achievement, reflection...etc.)
- ✓ Research papers
- ✓ Book reviews
- ✓ Analytical reports
- ✓ Article critique
- ✓ Collaborative work
- ✓ Peer assessment (monitored by instructor)
- ✓ External assessment (for evaluating the final dissertation)
- ✓ Dissertation (final defence)

## 7. Thesis and Its Requirements



### 7.1. Registration of the thesis

To receive a PhD degree in Applied Linguistics, completion of a PhD thesis is a requirement. The following is a summary of the process:

After successfully completing LNG 7301 and its requirements, students are allowed to register for LNG7399 which





is the Dissertation. The program follows the general guidelines and regulations for academic dissertations at higher studies programs articulated the Deanship of Higher studies at Imam Mohammad Ibn Saud Islamic University. A scientific committee headed by the Chair of the Department with College's Vice Dean for Higher Studies as a member assign each student a dissertation supervisor (and an Assistant Supervisor where applicable) who organizes regular meetings and academic advisory with the student until the topic of the dissertation is selected and a research proposal is submitted for approval. The committee sends the proposal to two specialized reviewers who evaluate the proposal and provide feedback for the student. The dissertation supervisor must hold an associate or professorship degree in the specialization of the students.

**Note.** The student should submit a thesis proposal to the department. The procedure is permissible after meeting all admission requirements and completing at least fifty percent of the course work with a cumulative average of at least “Very Good.”

**\*\*** Details of the requirements and procedures are available in the *Unified Bylaws for Graduate Studies in Saudi Universities* from article 41 to 59; click the [following link](#):



[Thesis Registration By laws](#)

Other useful links are:

[Dissertation composition guidelines](#)

[Dissertation official templates](#)



## 7.2. Scientific Supervision

As part of the course, each student will be allocated a research supervisor who will provide academic support and supervisory advice until the ultimate completion of the research project. Supervisory work covers all the successive stages involved in the completion of the dissertation:

- 1) *Documentation and data collection stage*: The student is fully guided and supported by the supervisor in gaining official access to databases and library resources inside and outside the KSA.
- 2) *Writing up stage*: The student is expected to fix a clear completion schedule approved by the supervisor to meet official deadlines. The supervisor is legally required to provide period timed reports on the student's progress.
- 3) *Final submission stage*: the student submits the final version of his dissertation. The supervisor writes an official declaration that the dissertation has been completed and that it meets accepted scientific standards. The letter entails an official request for organizing Dissertation defence.

These steps conform to:



- [Imam University's Deanship of higher studies](#) (Refer to pages 24 – 27)
- [Unified By Laws for Postgraduate Studies in Saudi Universities](#) (Refer to pages 24 – 27)

## 7.3. Thesis Defence/Examination

The Scientific Committee works with the student's supervisor to establish a defence panel. At least one member of the defence panel must hold full-professorship degree. Furthermore, at least one member of the defence must be



external (from a different university). All these guidelines are articulated by the Deanship of Higher Studies following the Unified Regulations Guide of Higher Studies in Saudi Arabia. These steps conform to the following documents:



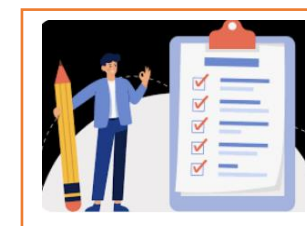
- [Imam University's Deanship of higher studies](#) (Refer to Pp. 28 – 34)
- [Unified By Laws for Postgraduate Studies in Saudi Universities](#) (Refer to Pp. 39 – 43)

## 8. Student Admission and Support

### 8.1 Admission and Transfer Requirements, and Courses Equivalency

#### A. University Enrolment Requirements:

1. Saudi nationality or an official grant on an exchange program if not a Saudi
2. A university degree obtained from a Saudi or other recognized university.
3. Good behaviour and medical fitness
4. Two letters of recommendation delivered by the candidate's former instructors.
5. Employer's permission if applicable
6. Paying the Program Fees. Yearly updated fees are available on university website ([click the link below](#))



**NB:** The candidate is not authorized to concurrently enrol in two programs.



- For more details about the required fees, please click on the following link:\*\*  
[[https://units.imamu.edu.sa/deanships/GRADUATE/announcements/Pages/%d9%82%d8%a8%d9%88%d9%84\\_1443/003.aspx](https://units.imamu.edu.sa/deanships/GRADUATE/announcements/Pages/%d9%82%d8%a8%d9%88%d9%84_1443/003.aspx)]



## **B. Department of English Enrolment Requirements:**

1. Holding a BA and MA degrees in one of the following majors with a minimum GPA of (3.75 out of 5.00):
  - a. BA/MA in English Language
  - b. BA/MA in English Literature
  - c. BA/MA in English Language and Literature
  - d. BA/MA in English Language and Linguistics
  - e. BA/MA in English Language and Translation
2. At least 80 points in the Post-Graduate General Aptitude Test (Qiyas)
3. A minimum IELTS academic score equal to (6.5) or its TOEFL equivalent (especially in writing and reading skills)
4. A model of a student's research production, which can be either a paper presented to the MA courses or the MA thesis.
5. A statement letter (written in English) on the purpose of the study.
6. Passing the program admission test and admission interview
7. Selecting the best candidates having prior experience and training record in case of equal candidates' scores or excess in the number of applicants to the program
8. C.V.



Click for [More details of program requirements for admission](#)



## 8.2 Guidance and Orientation Programs for New Students:

Before the start of classes, the academic advising team at the graduate studies office at the College of Languages and Translation arranges for an orientation program, which is scheduled for all new postgraduate students. The main goals of the orientation program are listed below:



1. Acquainting the newly admitted students with the general academic university regulations, policies, and services.
2. Familiarizing them with the specific regulations and the registration process of the Doctor of Philosophy in Applied Linguistics program at Imam Mohammad Ibn Saud University.
3. Introducing the students to their rights and responsibilities. The students are also oriented on adding and dropping classes and receiving refunds deadlines.
4. Introducing them to the University Life on the campus through making tours and visits to university facilities such as the library, parking lots, playgrounds, students' activities centres, etc. during these tours, the advising team locates the classrooms for them before classes begin.
2. Introducing students to the program's faculty members who are students' potential PhD supervisors and their research interests.



For more details click here [Manual guide for postgraduate students at the university](#)

**Upon the completion of the orientation program, postgraduate students receive a package that includes:**

- 1- The Program Handbook.
- 2- The Student ID Card,
- 3- The Academic Calendar.
- 4- Location maps to the building facilities and classrooms.



- 5- University booklets on how to use the e-services and Olya systems. (refer to the links below)
- 6- All to facilitate student's life in the university (e.g. Security documents explaining to the students how to receive security stickers for their cars).



- For more details about using the e-system services, please click on the following link:  
<https://imamu.edu.sa/Pages/StudentSystems.aspx>
- For details about using Olya, please click on the following link:  
[Manual for Olya E-services For PHD Students-.pdf](#)

## 8.3. Student Counselling Services

### 8.3.1 Academic Counselling:



In collaboration with the English department, the QADU prepares a yearly counselling calendar for students. The counselling program is meant to provide assistance to students in matters related to students' diverse activities within the university and if need be, to respond favourably to their psychological needs. The Unit uses digital means in its counselling mission, making thus relevant information and data available to students with easy and rapid access. Here are some hints about the functioning of the student counselling system in the program:

1. The General Academic Advisory office in both Male and Female Sections handles personal counselling case by case. For example, students requiring in-depth individual counselling are referred to the Student Advising Unit office at male and female campuses, where they can receive social, psychological, and financial assistance.
2. In the student-mentoring unit, a faculty member is assigned to about 3-4 doctoral students as an academic advisor. Academic Advisors meet with the assigned students individually or in groups at least four times during the academic semester. These meetings



provide valuable opportunities for information exchange and suggestions as to how the advisors can improve the student's educational experience.

3. Faculty members are also available two times a week to give consultations and advice to students during their office hours. The students may visit instructors in their offices or call them on the phone or other multimedia means. Accommodations for one-on-one consultations are also available if students need them.
4. The *Special Needs Unit* in the college is responsible for providing accommodations and facilities that fit students of disabilities. Committee members work with special needs students by identifying their individual problems and working on fulfilling his/her academic requirements.
5. Talented and gifted students are encouraged to participate in research activities, active seminars, community service, mentoring sessions and other activities available in the department. [more details are included in the academic counselling manual](#)
6. Social and psychological consultation is provided for students through *Enaya Unit* under the deanship of Students' Affairs which arrange for confidential counselling appointments by certified specialists.



- For more details about support provided to Talented and gifted students, please click on the following links:  
[the academic counselling manual](#)  
<https://me-qr.com/mobile/pdf/18589562>
- For details about Social and psychological consultation, please click on the following link:  
[Enaya unit website](#)

### 8.3.2 Support for Students with special needs

Students with special needs have been taken into consideration by the university and the college in a number of respects, most notably easy access to the premises, curriculum design and course delivery mode. Both remedial work and some particular tests are given to these students to improve their low achievement. Many efforts are made to help these students



overcome what impedes their high achievement and take advantage of the learning process. (For further details check again point 4 in the previous section: *Special Needs Unit*).

## 9. Student Rights and Duties

### 9.1 Student Rights

#### 9.1.1 Academic Rights

- ✓ Creating the appropriate environment for teaching and learning.
- ✓ Obtaining a university ID card and benefitting from university services according to university rules and regulations.
- ✓ Obtaining course plans and syllabi along with academic schedules.
- ✓ Enabling course registration as per guidelines and due dates of the university calendar.
- ✓ Holding lectures at their scheduled times.
- ✓ Knowledge of references for academic courses.
- ✓ Obtaining adequate clarification of course elements.
- ✓ Inquiring about and discussing scientific matters.
- ✓ Assessing students' academic achievements through various means according to the executive rules and regulations of test and study.
- ✓ Obtaining mid-term grades before final exam.
- ✓ Maintaining confidentiality of student's personal and academic information.
- ✓ Acquiring a graduation certificate after completing all requirements according to the rules and regulations of the program.
- ✓ Enabling those with special needs with the required aid for education.
- ✓ Benefitting from academic counselling services.







### **9.1.2 Non-academic Rights**

- ✓ Benefitting from student dorms according to rules and regulations.
- ✓ Providing medical care at university medical facilities.
- ✓ Benefitting from social services provided by the university according to rules and regulations.
- ✓ Benefitting from all university facilities according to rules and regulations

## **9.2 Student Duties**

### **9.2.1 Academic Duties**

- Adhering to university rules and regulations.
- Completing all academic procedures according to scheduled dates of the university.
- Attending all lectures and providing acceptable excuses (as per university rules and regulations) when absent.
- Abiding to academic integrity and ethical research rules.
- Avoid academic misconduct.
- Following academic announcements made on university website or on campus.
- Always carrying university ID and presenting it when needed.
- Maintaining university ID and returning it when no longer a student.
- Respecting exam regulations and not cheating or helping others cheat.

### **9.2.2 Non-academic Duties**

- Maintaining university facilities and using the facilities for their intended purpose as per rules and regulations.
- Good conduct on campus and never violating the rules.
- Keeping university facilities clean.



- Respecting all employees and visitors of the university.
- Giving accurate personal information and updating the information when necessary.
- Abiding to all consequences.
- Following university traffic rules.



- For more details, please click on the following link:  
[Student's Rights and Duties Handbook.pdf](#)

## 10. Program Quality Assurance system

The program quality assurance system includes the following:

1. The program provides updated course specification for each of the courses.
2. The course specifications are to be observed by all instructors of the different sections in both the male and female campuses.
3. Each instructor writes a course report for each course he/she is teaching.
4. Each instructor provides students with a course syllabus and send a copy for the quality assurance unit.
5. Each instructor provides varying-level samples of students' course work and final exam.
6. Earlier course reports and suggested action plans are sent to instructors who currently teach the course so that they apply the required suggested actions.





## 10.1 Program Quality Monitoring Procedures

Program quality monitoring procedures are done based on annual reviews and planning for improvement as follows:

1. A subject coordinator and a course convener are appointed (from both the male and the female campuses) for each subject and each course to ensure that the new specification is followed.
2. A unified policy concerning textbooks, scope, and depth of coverage of content, exams, and marking rubrics are established and followed by the subject coordinator.
3. The course convener composes a generalized course report compiled from a synthesis of course reports submitted by different instructors.
4. Teaching staff from the male and female sections have participation in monitoring program quality through surveys distributed to them to evaluate the program almost every semester or annually. Upon their evaluation plans for improvement, action plans are initiated and implemented for areas of weaknesses.



- For more details, please use the following links:  
[\*Program Quality Monitoring Procedures\*](#)  
[More here](#)



## 11. Handbook Approval

- College Council, Minutes (-----)
- Date: -----



## 12. Useful links

**## Services provided by the university electronic services (e-system) for students and faculty members**

<https://imamu.edu.sa/en/eServices/Pages/default.aspx>

**## The website of the University Central Library and the services it offers to students and faculty members.**

<https://imamu.edu.sa/en/libraries/Pages/default.aspx>

**## Saudi Digital Library Access from the University Website**

<https://imamu.edu.sa/Pages/esystems.aspx>

**## Student self-services website**

[imamu.edu.sa](https://imamu.edu.sa) لوحة معلومات الخدمات الطلابية

**## Writing Thesis Manual**



**## Complaints and Grievances Policy**





## Contact us



**Male Section**  
**0112587405**  
**[vdea@imamu.edu.sa](mailto:vdea@imamu.edu.sa)**



**Female section**  
**0112597584**  
**[Cl\\_t\\_kacfs@imamu.edu.sa](mailto:Cl_t_kacfs@imamu.edu.sa)**



**Tawāṣul:** use the link [crm.imamu.edu.sa](http://crm.imamu.edu.sa), then select College of Languages and Translation

