



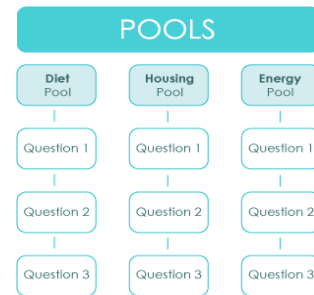
## Blackboard... Learn more... go further..

### Creating Tests Using Pools

Pools are collections and groups of questions that can be included in exams. Questions may be reused in several tests or surveys, or even across multiple courses.

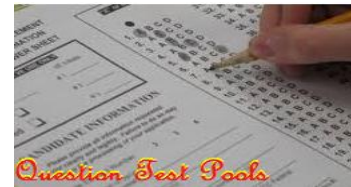
Another aspect of Blackboard in this matter is that it helps reduce cheating. Of course, cheating cannot be prevented totally in home works. However, Blackboard and other tools and rules can help in reducing it but not eradicating it. Those who are comfortable with take-home assessments should consider Blackboard especially that its Question Pools can be seen as a test banks. Cumulative exams can be assembled, randomly assigning different questions to different users, so that no two students see the same questions in the same order.

This video<sup>1</sup> explains how to perform this interesting task.



### How to Build a Pool

- 1- On the Control Panel, expand the Course Tools section and click Tests, Surveys, and Pools.
- 2- On the Tests, Surveys, and Pools page, click Pools.
- 3- On the Pools page, click Build Pool on the action bar.
- 4- Complete the Pool Information page and click Submit.
- 5- To add questions, you can Create Questions, Upload Questions, or Find Questions in other tests, surveys, and pools.
- 6- Click OK to return to the Pools page.



### How to Import a Pool

- 1- On the Pools page, click Import Pool.
- 2- On the Pool Import page, click Browse My Computer.
- 3- Click Submit. The Pool Import Complete page appears.
- 4- The imported pool is added to the list on the Pool Manager page.

### How to Edit Existing Pools

- 1- On the Pools page, access a pool's contextual menu and click Edit.
- 2- Add questions, delete questions, or change point values.

### How to Edit Questions in a Pool

- 1- On the Pools page, access a pool's contextual menu and click Edit.
- 2- On the Pool Canvas, you can filter the list of questions by making selections in the Browse Criteria panel.
- 3- Access a question's contextual menu and click Edit to make your changes.
- 4- Click Submit to commit your changes in all tests where that question appears. Alternatively, you can Save as New to create a new question, which does not require regrading of existing attempts.

### References

#### Creating and editing Pools:

<https://blackboardhelp.usc.edu/assessments/question-pools/creating-and-importing-pools-of-questions/>

#### ccis shared folder – Excel sheet prepared for online attendance system:

<\\10.10.70.70\Blackboard\Documents>

<sup>1</sup> [http://ondemand.blackboard.com/r91/movies/bb91\\_tests\\_surveys\\_building\\_a\\_pool.htm](http://ondemand.blackboard.com/r91/movies/bb91_tests_surveys_building_a_pool.htm)